



Beautiful. Durable. Maintenance Free.



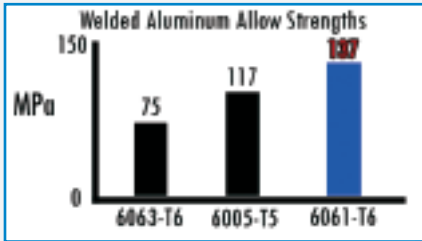
**Some Clear Reasons To Buy
A Wahoo Aluminum Dock.**

Discover The Difference

Wahoo Builds The Best Aluminum Dock.

1 Better Materials

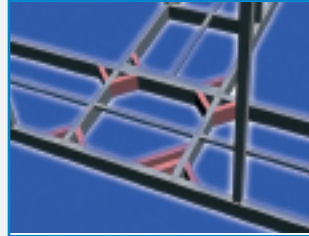
We use 6061-T6 grade aluminum for our structural members which is more durable and welds significantly stronger than all other 6000 series aluminum.



Competitors typically use less expensive grades of aluminum including 6005-T5 or 6063-T6.

4 Gussetting

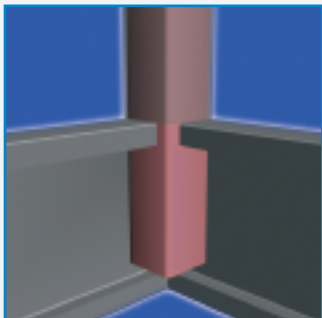
We incorporate unparalleled gussetting throughout our docks at all locations where welded connections are stressed or the mainframe can be strained.



Because the “as welded” strength of aluminum is less than its unwelded strength, generous use of gussetting is critical to an aluminum dock.

2 Through-welded Roof Posts

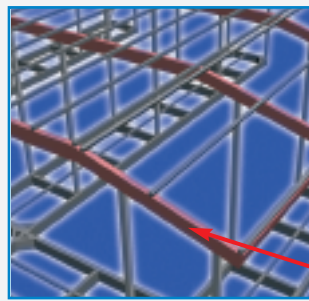
Roof post stubs are cut into and welded through the 8" c-channel mainframe in high stress areas to incorporate the strength of the mainframe into the roof supports.



Competitors typically “butt-weld” stubs to the top of the mainframe which is a faster manufacturing process, but creates a fragile joint and a much less solid structure.

5 Heavy Duty Roof Structure

We use the same 8" x 3/16" thick c-channel throughout the roof structure that we use in the lower structure and band the roof in this material to create a rigid 'box' framework.



Competitors typically use a thinner c-channel or lighter weight shapes in their roof which may look similar and are significantly less expensive, but lack stiffness and strength.

3/16" thick c-channel

3 Custom Materials

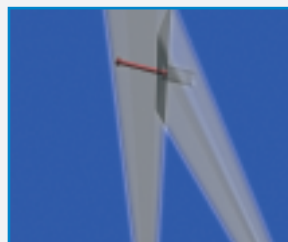
We have invested heavily in custom components such as aluminum extrusions, bumpers, castings, fasteners, decking, trim, etc. This investment allows us to create a dock that is uniquely durable and has a finished appearance like no other.



6 Diagonal Bracing

We use 3" x 3" bracing with engineered connections to create a uniquely rigid dock while making the usable space on the dock as functional as possible.

Competitors typically use lighter bracing material, if any at all, and placement is not functional.



Wahoo



Competitor - Ugh!!

7 Local Dealer Representation

Our well trained, nationwide dealer network is fully charged with understanding customer needs, customer education, scheduling, installation and after sales support.



We are highly selective as to who joins the Wahoo family and base our partnerships on ethics, knowledge, workmanship and capabilities.

8 Top Quality Engineering

Wahoo is owned by engineers who place great value on the physical, chemical and environmental factors that affect our docks. Each and every dock is individually designed by an engineer using computer-aided design software and a wealth of experience.



Our docks are not reverse engineered copies of a Wahoo dock – they are Wahoo docks!

9 Through-Bolted Roof Supports

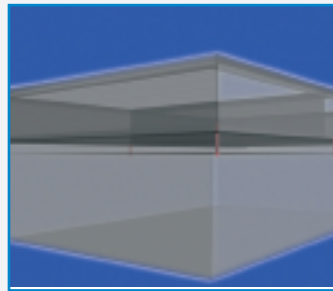
Each roof pole is secured to the framework using 3/8" stainless steel bolts with nylon lock nuts to provide a durable, always-tight connection.



Competitors typically use lightweight tech screws to secure roof poles which often work themselves loose over time.

10 Through-Bolted Float Attachment

Our floats are attached to the framework with 3/8" bolts and secured with nylon locknuts to ensure they never get loose or separate from the dock.



Competitors typically attach their floats with lag screws which are quickly installed, but can work themselves loose over time.

11 Rot and Rust-proof Materials

From our fasteners and decking to our roof beams and main frame, our materials have been individually selected to last many years without rusting, rotting or wearing in general.

Competitors often rely on low-cost galvanized fasteners and hardware. Some competitors even use wood stringers under their decking, or galvanized roof pans below their upper decks.

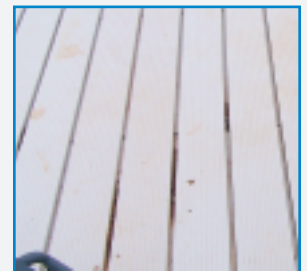
12 AridDek Aluminum Decking

Our decking is a long-lasting, proven material that offers unsurpassed longevity, is easy to keep clean and is cool to the touch.

The design of competitive decking products makes their application on the lower deck difficult, if not impossible. As a result, the aluminum decking typically used on the main deck of competitive docks is uncomfortable, difficult to clean and is noisy when dirt collects in the grooves.



Wahoo



Competitors

13 Unparalleled Customer Service

Our dealer representatives, company literature, web site and staff are all focused primarily around educating and supporting prospective dock buyers. Our organization strives to be knowledgeable, prompt, provide realistic expectations and is uniquely able to ensure that the delivered product exactly meets our customer's vision.

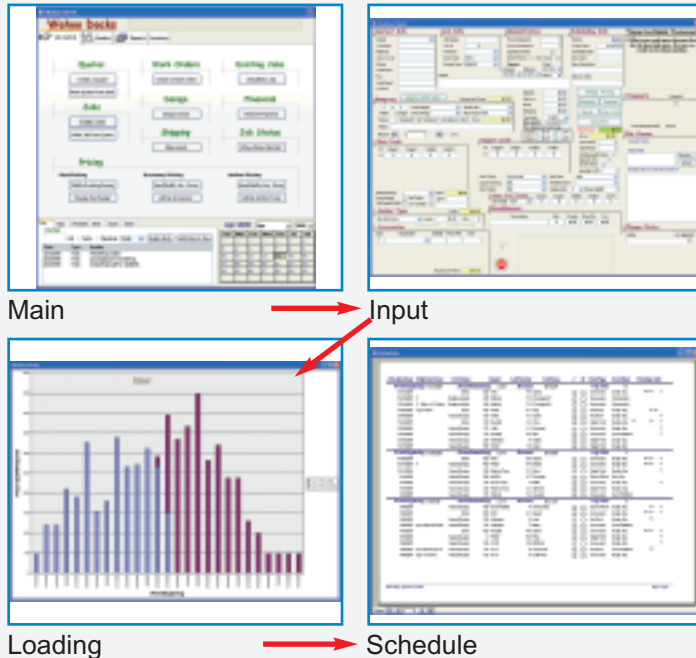
14 Superior Welding

All welding is done in a highly controlled environment using the MIG process by skilled professionals. In order to become a welder at Wahoo, new employees must first apprentice for several months.

Some competitors weld components in the "field" which significantly jeopardizes the quality of the welds because of the variable environmental conditions that affect sensitive equipment settings and necessary gas shielding.

15 On Time, Every Time

Our proprietary, in-house developed computer system (D.O.T.S) enables us to manage inventory, design components of our docks and accurately schedule production with precision.



16 Volume Benefits

We build more aluminum docks than any other aluminum dock manufacturer and are able to obtain substantial concessions from our suppliers, develop numerous custom components and spread our overhead over a large number of docks.

17 Leak-proof Upper Decks

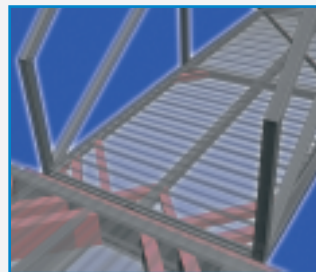
The combination of AridDek, our in-house assembled rail system, and our custom cast rail components produce a truly attractive, seamless, waterproof upper deck.

Competitive upper deck designs abound, ranging from the use of galvanized roof pans (no access to AridDek type decking), unpainted rail components (much cheaper to build), and rail posts that attach to stubs that go through the decking and must be caulked (it is impossible to get a truly leak-proof upper deck this way).



18 Superior Gangways

Our gangway design utilizes a truss for a high strength/material ratio and our unparalleled reinforcements, full piano hinge and structurally sound weld locations creates a very strong, economical span.



Our gangways are reinforced at all potential failure locations, and our hinge design has no equal!

Wahoo Docks

1604 Athens Hwy. • Gainesville, GA 30507 • 770.532.8411 • Toll Free 866.532.8411
Fax 770.532.2983 • www.wahoodocks.com